

PDF Source: <https://www.ifixit.com/Guide/Yellow+Light+of+Death+Repair/3654>

Yellow Light of Death Repair

Written By: Brett Hartt (and 12 other contributors)



FEATURED GUIDE



Difficulty

— — — — — Difficult



Steps

50



Time Required

1 - 2 hours



Sections

9



Flags

1



Introduction

Use this guide to repair PlayStation 3s with the "Yellow Light of Death" error.

Note: Your PlayStation may look slightly different inside. Be cautious when performing this process on your machine.

Tools

Spudger
T10 Torx Screw Driver
Phillips Screw Driver
Heat Gun

Parts

 [Buy these parts](#)



PlayStation 3 Yellow Light of Death
(YLOD) Fix Kit
\$49.99

[Buy](#)

Thermal Paste
ArcticClean
Thermal Pads

Video Overview



Step 1 Smart Plate



- Use the tip of a spudger to remove the black rubber screw cover from the side of the PS3.
- ⓘ The screw cover may be underneath a warranty sticker. This sticker will change appearance, and show "VOID" after it has been removed.

 [Add a comment](#)

Step 2



- Remove the single 8.5 mm T10 Security Torx screw from the smart plate.

 Add a comment

Step 3



- Pull the smart plate toward the hard drive bay, then lift it off the body of the PS3.

 Add a comment

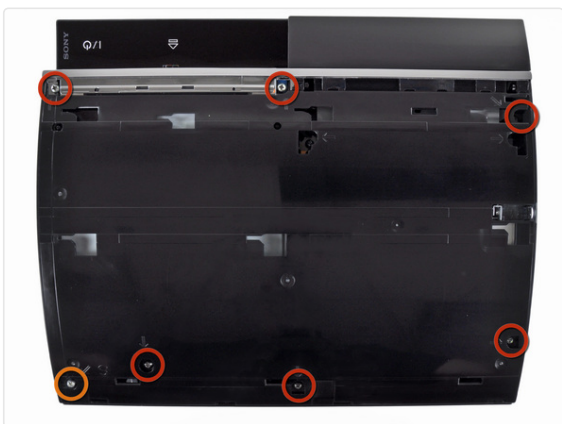
Step 4

-  Be sure to keep track of the small metal bracket loosely held in the top cover, if equipped.



[One comment](#)

Step 5 Top Cover



- Remove the following seven screws:

- Six 52 mm Phillips screws
- One 30 mm Phillips screw

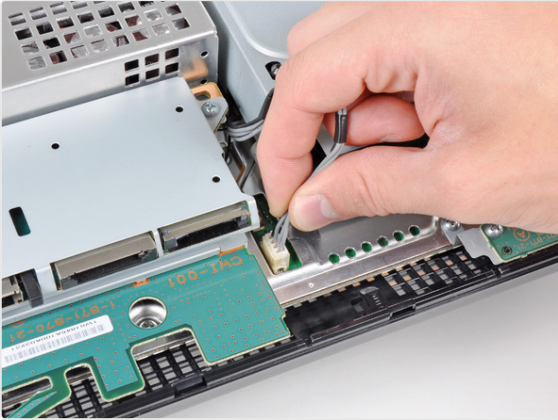
[8 comments](#)

Step 6



- Lift the top cover from its rear edge and rotate it toward the front of the PS3.
- Remove the top cover.

Step 7 Blu-ray Disc Drive



- Disconnect the Blu-ray power cable from the motherboard.
- ① Pull the connector straight up and out of its socket.

Add a comment

Step 8

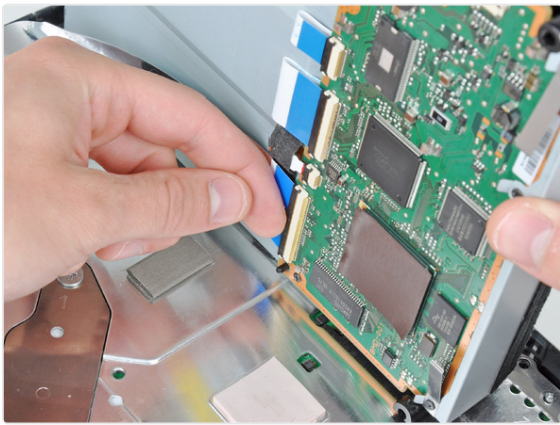


- Lift the Blu-ray drive from the edge nearest the power supply and rotate it away from the chassis enough to access its ribbon cable.

Add a comment

Step 9

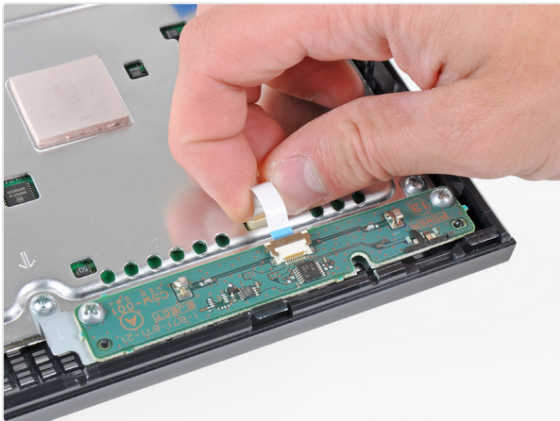




- Use your fingernail to flip up the retaining flap on the Blu-ray ribbon cable socket.
- ⚠ Be sure you are prying up on the retaining flap, **not** the socket itself.
- Pull the ribbon cable out of its socket.
- Remove the Blu-ray drive from the PS3.
- 🔧 If replacing the Blu-ray drive, transfer the power cable to your new drive.

[7 comments](#)

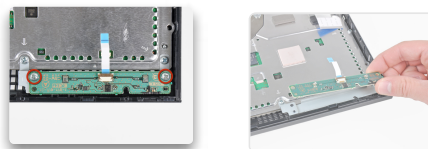
Step 10 Motherboard Assembly



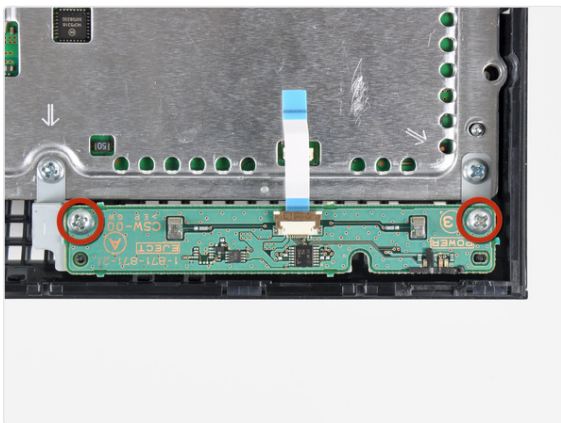
- Pull the control board ribbon cable straight up and out of its socket on the motherboard.

[One comment](#)

Step 11



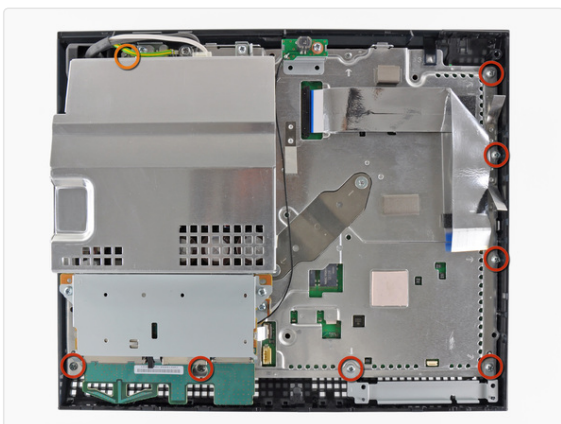
- Remove the two 12 mm Phillips screws securing the control board to the lower case.



- Remove the control board and its attached cable from the PS3.

[Add a comment](#)

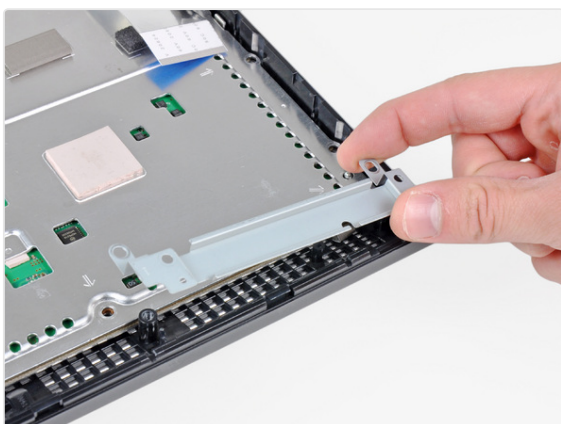
Step 12



- Remove the following eight screws securing the motherboard assembly to the lower case:
 - Seven 12 mm Phillips screws (ph2)
 - One 30 mm Phillips screw

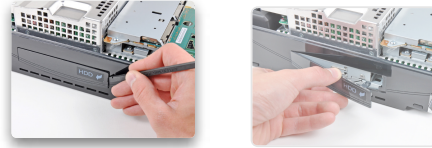
[One comment](#)

Step 13



- Remove the control board bracket.

Step 14



- Use the flat end of a spudger to pry the hard drive bay cover away from the lower case.
- Remove the hard drive bay cover.

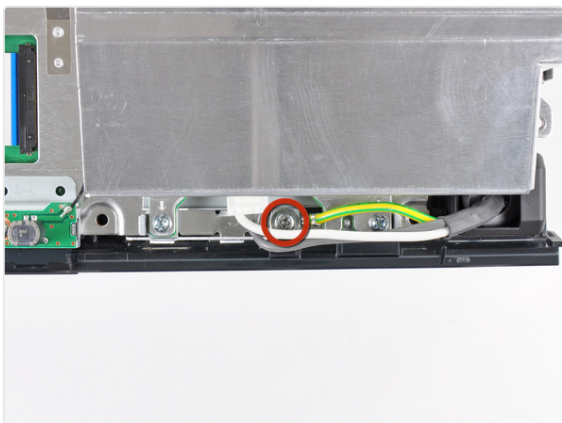
Step 15



- Lift the motherboard assembly out of the lower case.

Step 16 AC Inlet

- Remove the 7.7 mm Phillips screw securing the ground strap to the chassis.



[One comment](#)

Step 17



- Pull the AC-In cables slightly away from the rear cover for clearance to access the AC-In connector.
- While depressing its locking mechanism, pull the AC-In connector out of its socket on the power supply.

[Add a comment](#)

Step 18

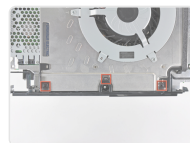
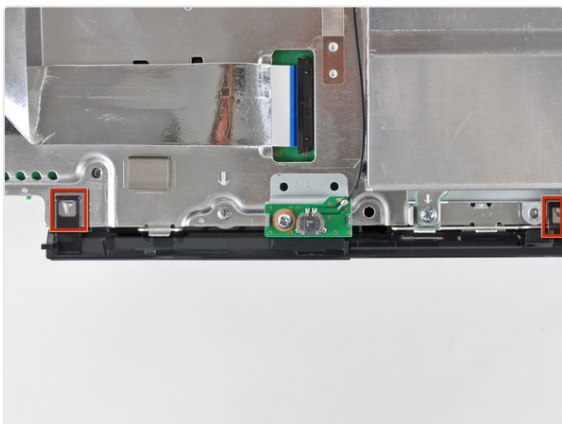
- Pull the AC inlet out from the bottom of the rear cover,



minding any of its cables that may get caught.

[3 comments](#)

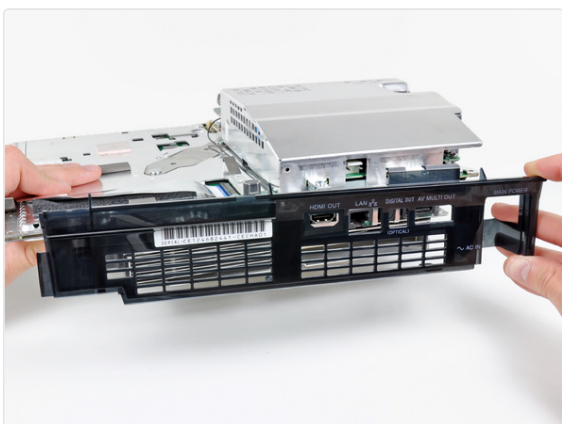
Step 19 Rear Cover



- While lightly pulling the rear cover away from the logic board assembly, use the flat end of a spudger to release the clips along the top and bottom edges of the rear cover.

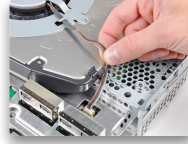
[Add a comment](#)

Step 20



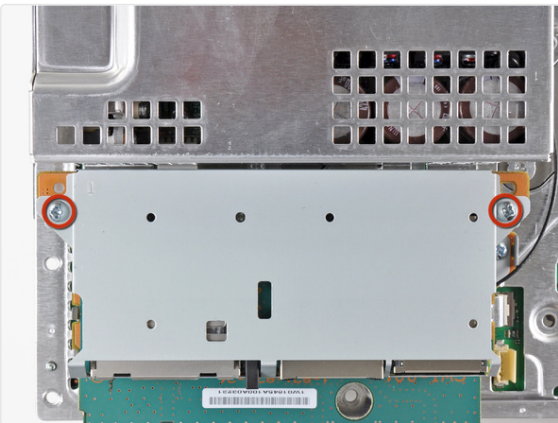
- Remove the rear cover from the logic board assembly.

Step 21 Heat Sink



- De-route the fan cables from the plastic finger molded into the heat sink.
- Disconnect the fan from the motherboard.
- Pull the connector straight up and out of its socket.

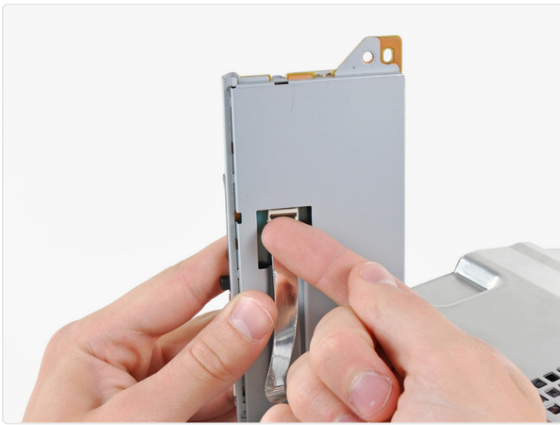
Step 22



- Remove the two 9 mm Phillips screws securing the memory card reader to the chassis.

Step 23





- Lift the memory card reader out of the PS3 enough to access its ribbon cable.
- Flip up the retaining flap on the memory card reader ribbon cable socket.
- ⚠ Be sure you are prying up on the retaining flap, **not** the socket itself.
- Pull the ribbon cable out of its socket and remove the memory card reader.

 [One comment](#)

Step 24

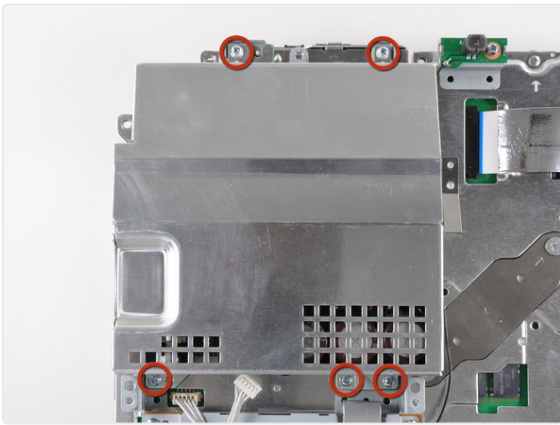


- Disconnect the DC-In cables from the front of the heat sink.
- ⓘ Pull the connector toward the front of the PS3.

 [Add a comment](#)

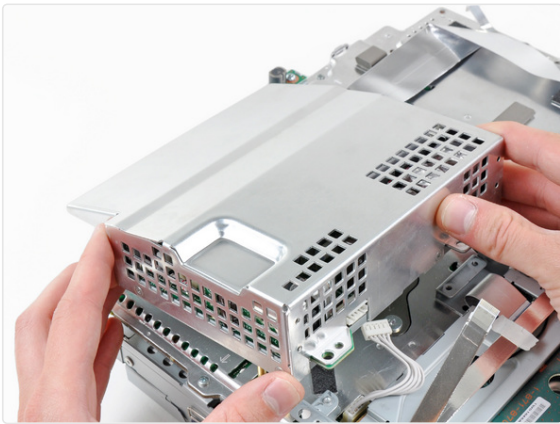
Step 25

- Remove the five 9 mm Phillips screws securing the power supply to the chassis.



 [Add a comment](#)

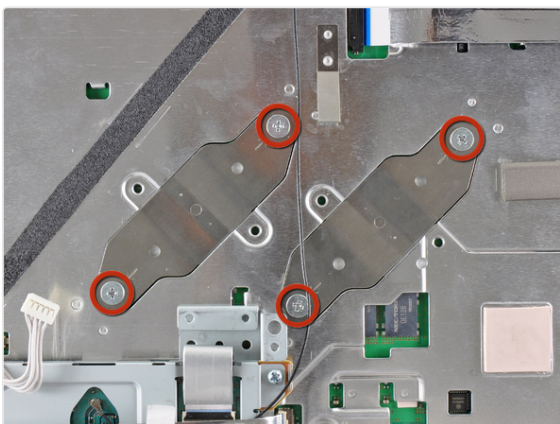
Step 26



- Lift the power supply by its front edge to clear the two posts attached to the motherboard.
- Remove the power supply.

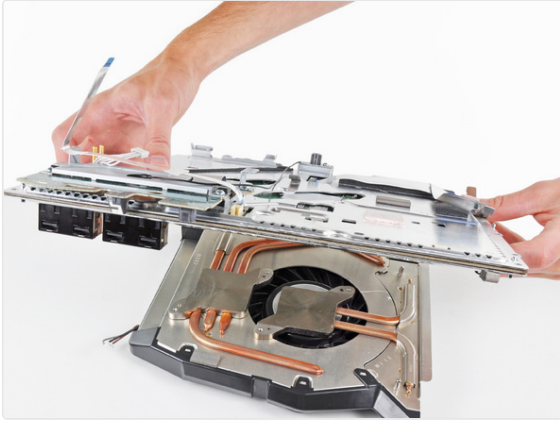
 [One comment](#)

Step 27



- Remove the four 16.5 mm shouldered Phillips screws securing the heat sink to the motherboard.
- Remove the two brackets held under the screws you just removed.

Step 28



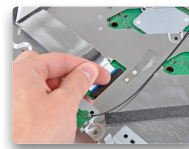
- Lift the motherboard assembly off the heat sink.

⚠ The heat sink may still be held in place by the thermal paste. If this is the case, gently pry the heat sink away from the motherboard housing. Make sure to not bend the copper piping on the heat sink.

- Be sure to apply a new layer of thermal paste when reattaching the heat sink.
- ⓘ Never applied thermal paste before? Our [thermal paste guide](#) makes it easy.
- ⓘ If you're following the YLOD repair guide, stay tuned for where to apply the replacement thermal paste.

💬 2 comments

Step 29 Motherboard



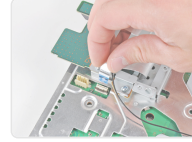
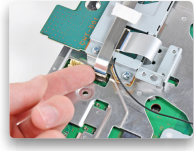
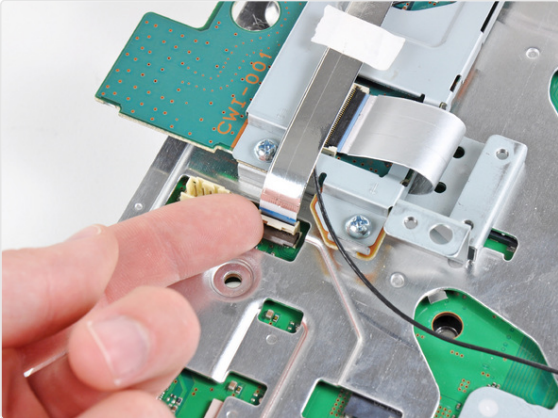
- Flip up the retaining flap on the Blu-ray ribbon cable socket.

⚠ Be sure you are prying up on the retaining flap, **not** the socket itself.

- Remove the Blu-ray ribbon cable.

💬 One comment

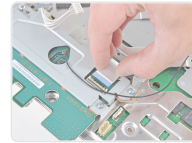
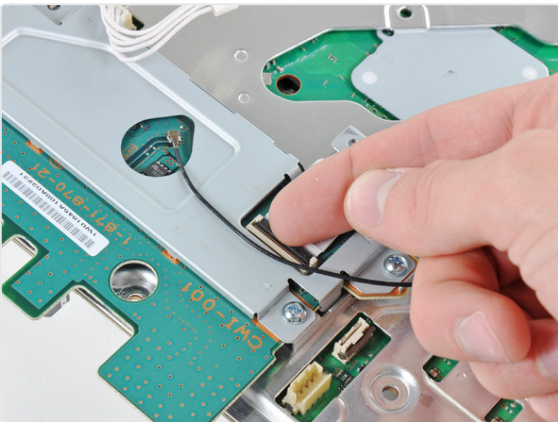
Step 30



- Flip up the flap on the memory card reader ribbon cable socket and remove the ribbon cable.

 [Add a comment](#)

Step 31

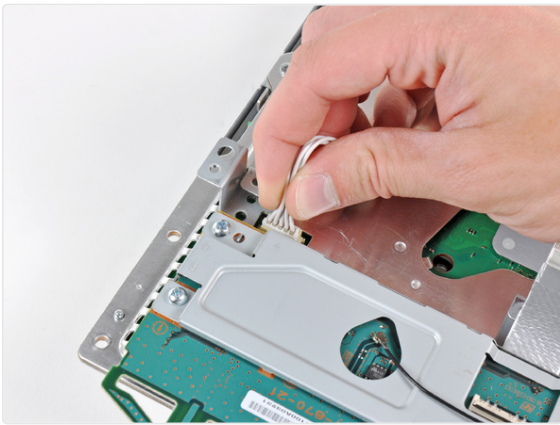


- Flip up the retaining flap on the Wi-Fi/Bluetooth ribbon cable socket.
- Pull the Wi-Fi/Bluetooth ribbon cable out of its socket.

 [Add a comment](#)

Step 32

- Disconnect the DC-In cable from the motherboard and set it aside.
- ⓘ Pull the connector straight up and out of its socket on the motherboard.




 [Add a comment](#)

Step 33

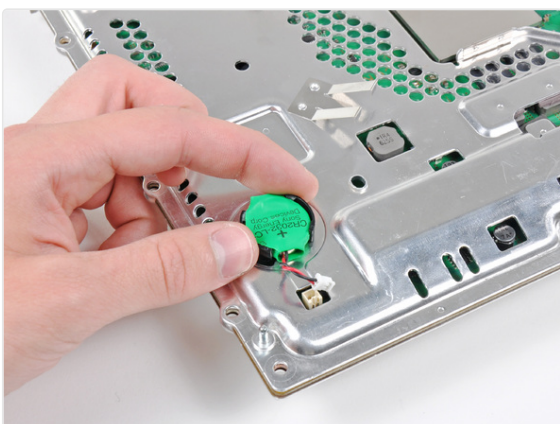


- Disconnect the PRAM battery from the motherboard.

 The PRAM socket is delicate and has the potential to break off the motherboard. If possible, hold down the socket as you disconnect the PRAM battery cable.

 [One comment](#)

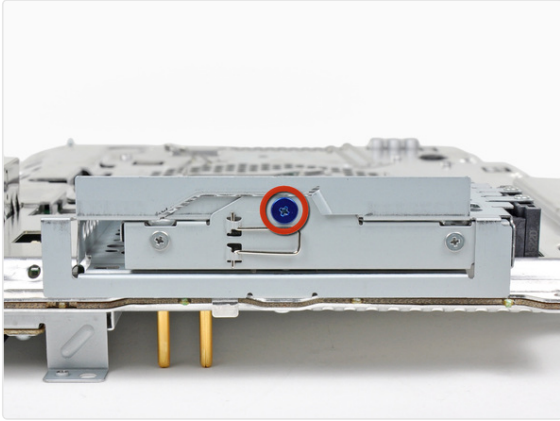
Step 34



- Rotate the PRAM battery slightly counter-clockwise and remove it from the motherboard assembly.



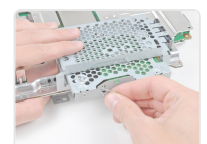
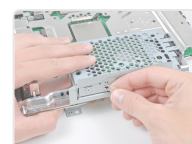
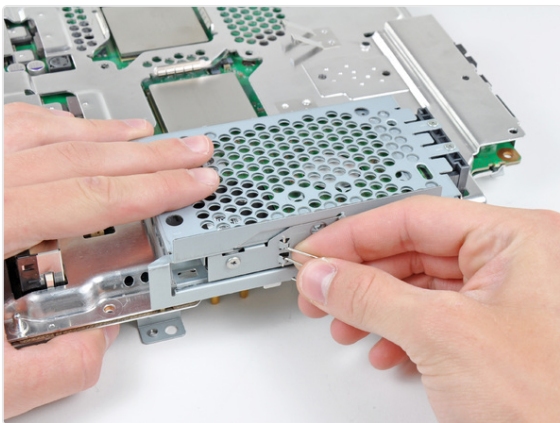
Step 35



- Remove the blue 8 mm Phillips screw securing the hard drive cage to the chassis.

 Add a comment

Step 36

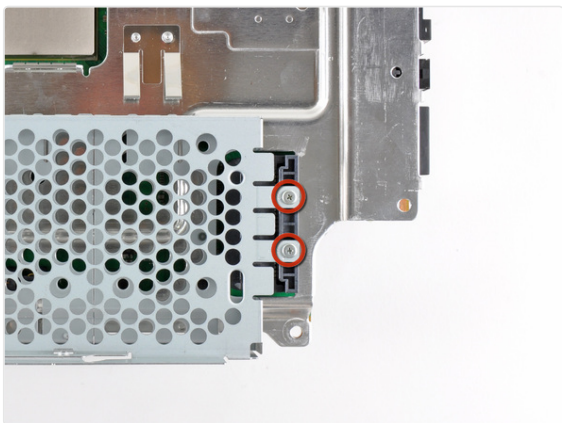


- Push the hard drive cage toward the front of the motherboard assembly.
- Remove the hard drive from the motherboard assembly.

 Add a comment

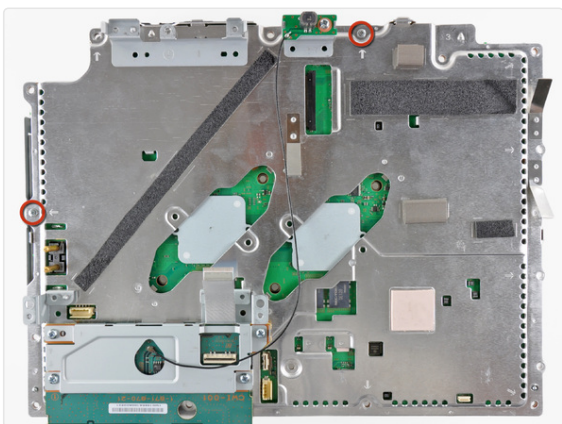
Step 37

- Remove the two 3.7 mm #0 Phillips screws securing the chassis to the hard drive socket.



[Add a comment](#)

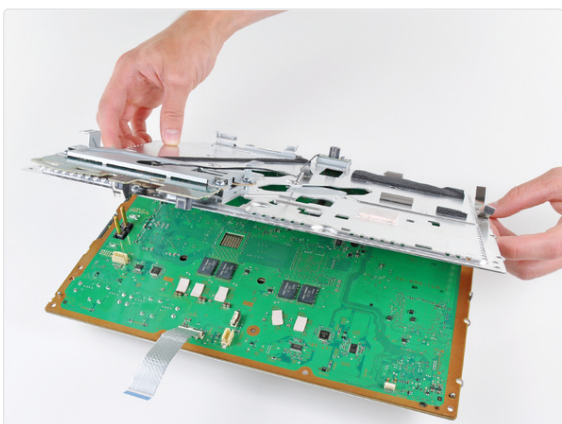
Step 38



- Remove the two 8.3 mm #0 Phillips screws securing the two halves of the motherboard together.

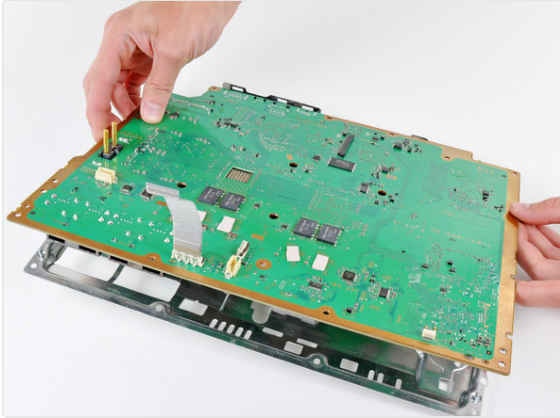
[One comment](#)

Step 39



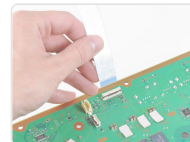
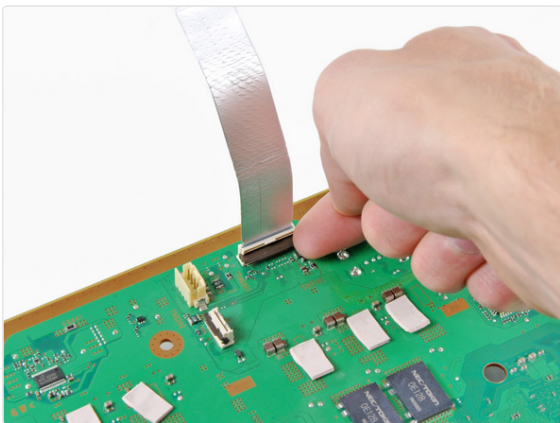
- Carefully feed the Wi-Fi/Bluetooth ribbon cable through the hole in the top motherboard cover.
- Remove the top motherboard cover.

Step 40



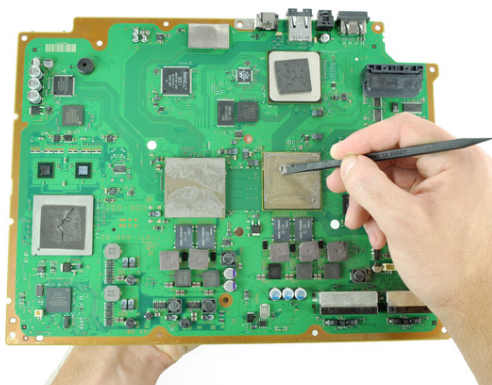
- Remove the motherboard from the bottom motherboard cover.

Step 41



- Flip up the retaining flap on the Wi-Fi/Bluetooth ribbon cable socket.
- Remove the Wi-Fi/Bluetooth ribbon cable from the motherboard.
- Motherboard remains.

Step 42 Yellow Light of Death (YLOD) Fix Kit



TOOLS USED ON THIS STEP:
Arctic Silver ArctiClean

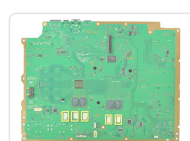
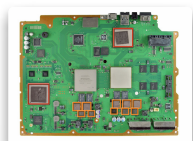
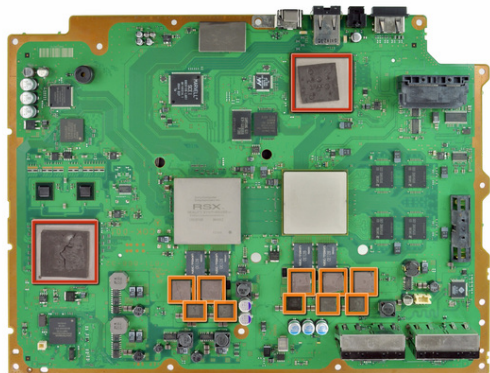
\$7.99



- Using the flat end of the spudger, remove the old thermal paste off the CPU and GPU on the motherboard.
- Using a cleaner such as Arctic Silver's [ArctiClean](#) or high alcohol content rubbing alcohol, clean the CPU and GPU.
- ❗ Clean the thermal paste off of the heat sink in the same way.

[One comment](#)

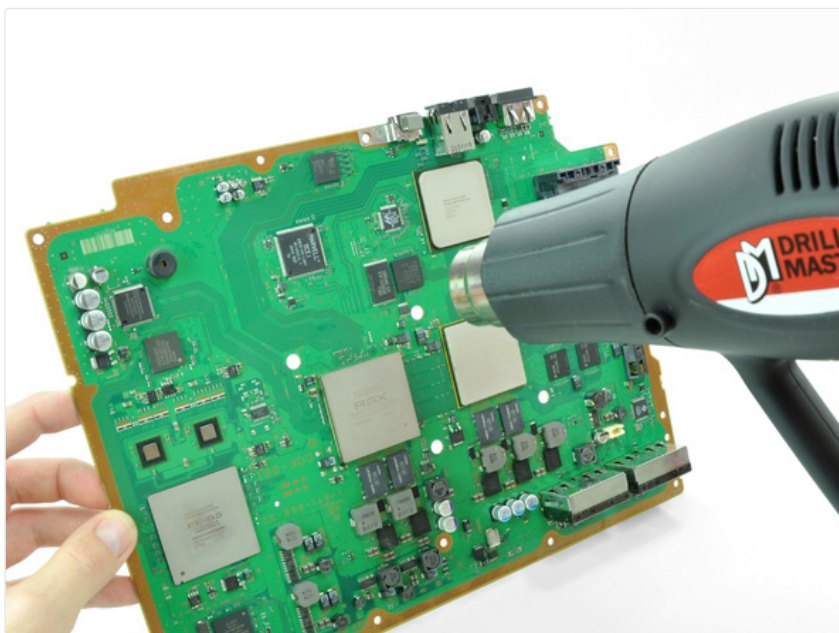
Step 43



- Using your fingers or the flat end of a spudger, remove the old thermal pads on the logic board as indicated:
 - Large square thermal pads
 - Small square thermal pads
 - Small rectangular thermal pads (located on the underside of the board, as highlighted in the second picture)
- ❗ Some of the smaller thermal pads may be attached to the metal casing that surrounds the motherboard rather than the motherboard itself.

[One comment](#)

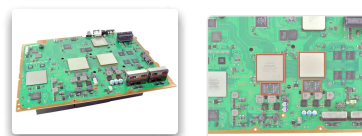
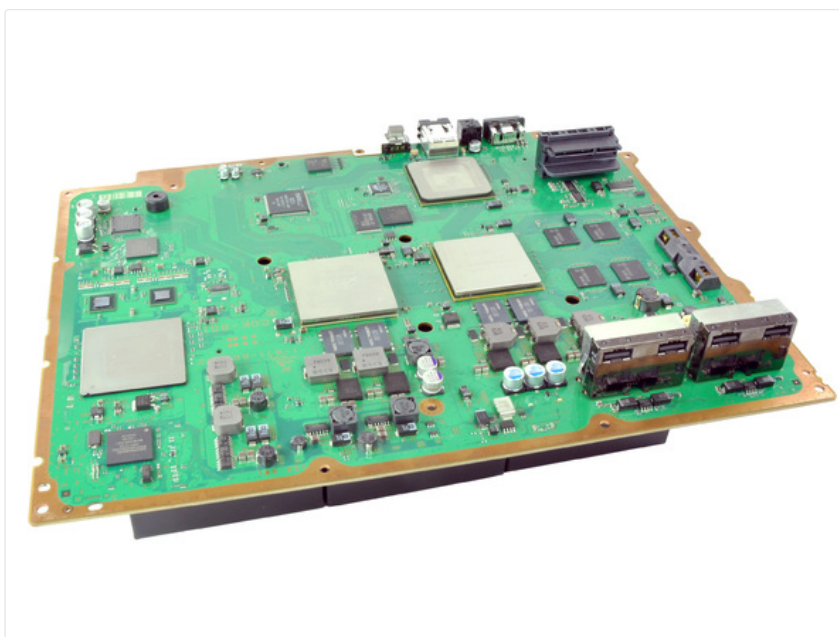
Step 44



- Set the heat gun to "Low", and let it run for a few seconds to reach operating temperature.
 - Holding the motherboard upright, warm up the entire board with the heat gun. The board should be warm, but not too hot.
- ⓘ This will prevent damage to the board caused by localized thermal expansion.

[6 comments](#)

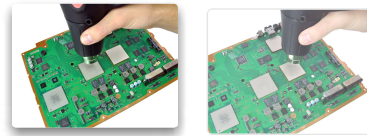
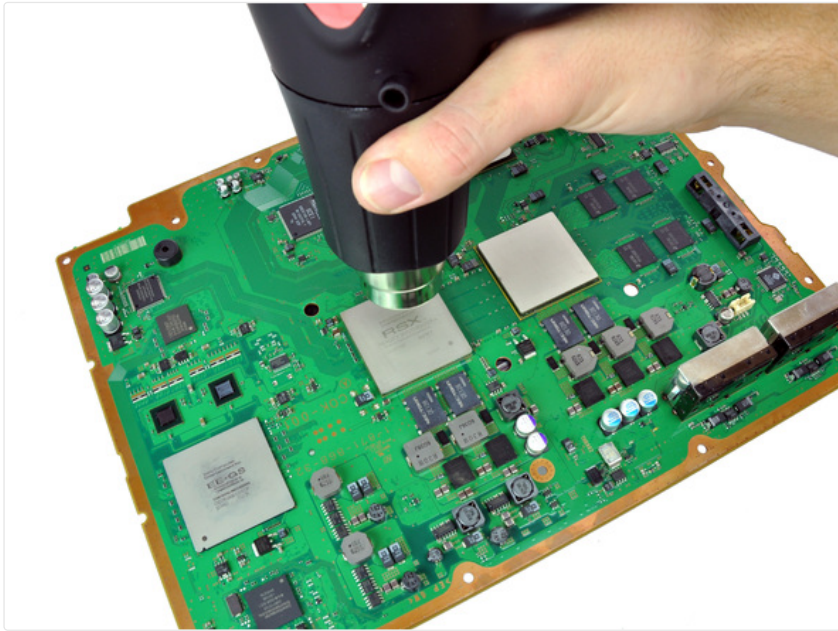
Step 45



- Set the motherboard on a support so that the CPU and GPU are completely supported and level.
- ⓘ The support should be something that can resist temperatures upwards of 300 degrees Celsius. Suggestions: scrap lumber, old books, cardboard box.
- ⓘ In the next few steps, you will be reflowing the solder under the chips marked in red.
- ⚠ Once you begin reflowing the chips, do not touch or move the motherboard until it is completely cool. Doing so can render the motherboard irreparably damaged.

[3 comments](#)

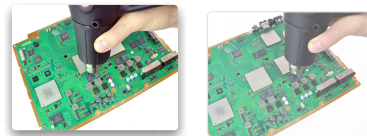
Step 46



- Using a circular motion, evenly heat (using low heat) each of the four areas for roughly 25 seconds each.
- Begin heating the GPU, marked "RSX", and heat the chips in a zig-zag order.

[3 comments](#)

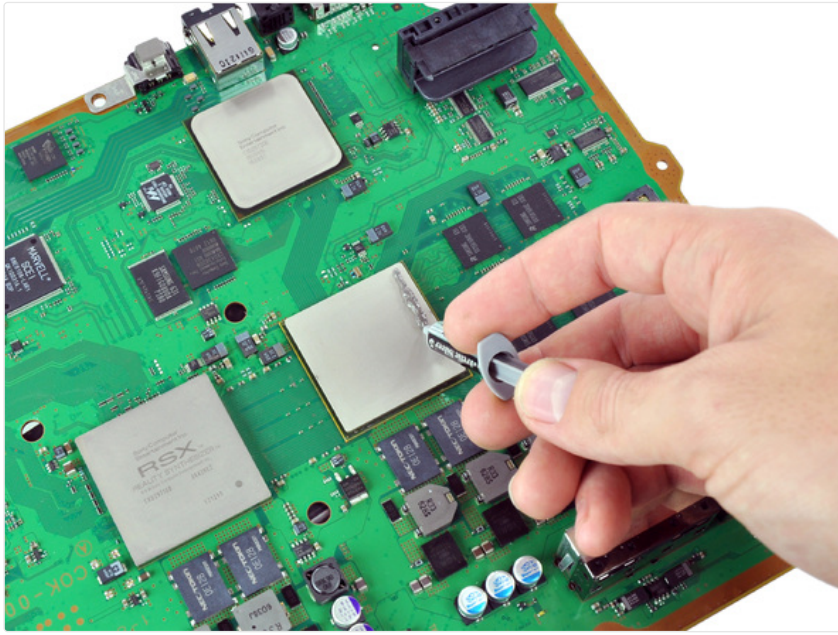
Step 47



- Continue heating the chips using the same circular motion as described above, for about 25 seconds each.

[Add a comment](#)

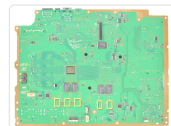
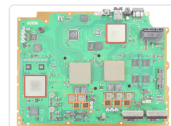
Step 48



- ✦ Ensure that the motherboard has completely cooled before continuing this guide.
- If you have not applied thermal paste before you can check our [thermal paste guide](#) whilst it is cooling.
- Apply a thin bead of thermal paste on the CPU.
- Using the thermal paste spreader card, spread the paste out thinly and evenly on the chip.
- In the same way, apply a thin layer of thermal paste on the GPU.
- Clean up any excess thermal paste off the motherboard.

[4 comments](#)

Step 49



- Apply the fresh thermal pads to the motherboard in the locations indicated:

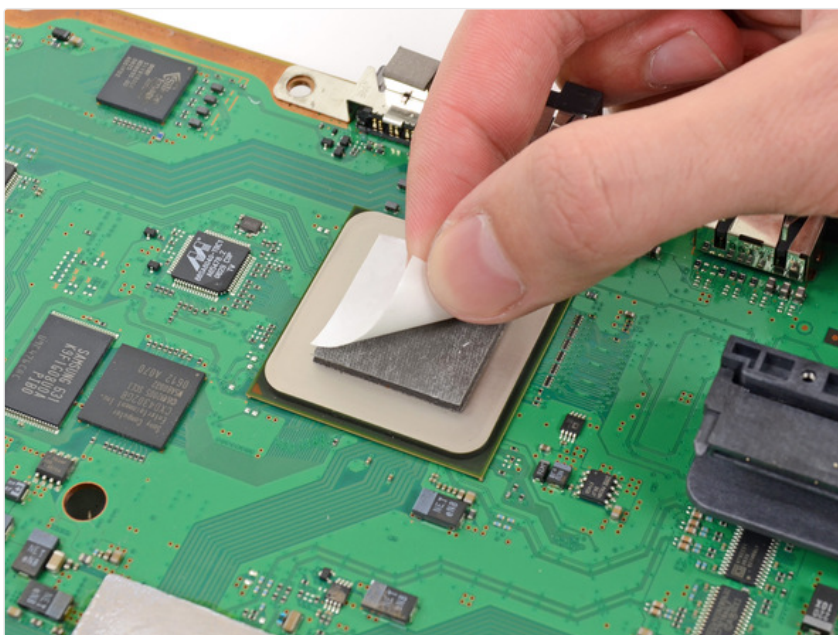
- Large square pads
- Small square pads
- Small Rectangular Pads

i If you'd like to cut your own thermal you'll need material about 2-2.5mm in thickness. Thanks to user [howardsarah34](#) for the exact measurements for the thermal pads.

- Two 3cm x 3cm Squares
- Ten 1cm x 1cm Squares
- Five 1.5cm x 0.5cm rectangles

[5 comments](#)

Step 50



- Peel the remaining white plastic cover off the other side of thermal pads.

[10 comments](#)

CONCLUSION

To reassemble your device, follow these instructions in reverse order starting at [step 41](#).

✓ Give the author +30 points!

1140 other people completed this guide.

Author



Brett Hartt

Member since: 04/12/2010

102,960 Reputation

287 Guides authored

with 12 other contributors

Badges: 50



+47 more badges

Team



iFixit

Community

121 Members

4,915 Guides authored

172 COMMENTS

Contact Support

Add a comment



Done this twice, first time it lasted 2 weeks and the second time 10 days. I'll do it one more time and if it goes again, I think I'll be buying a new console.

Great repair guide, clear and simple -I don't know why it's rated as difficult -there's no soldering or wiring to do.

[Franco](#) - 10/25/2011

great repaier guiad

[hamza](#) - 03/15/2017



Great kit! And it worked! We have brought the PS3 back to life! Hoping it stays this way! But for the price of the kit it is worth the try!

[ekozocas](#) - 11/20/2011



I completed this repair last night. It wasn't as hard as I thought, though it did take me almost 3 hours to accomplish. My PS3 is back up and running, and the fan is so quiet not I can hardly hear it.

I will add that these pictures provided are from a 60GB launch PS3. I have an 80GB (MGS4 Bundle), and some of the inner workings are a little different. The card reader remains attached to the upper casing, and the ground wire for the A/C switch is run under the power supply... as opposed to over it as it is in this guide.

Overall, this is a great guide and the kit was a great price. I hope my PS3 will remain operational at least through Christmas... I've got my eye on the UC3 Bundle;)

[jshaas](#) - 12/01/2011